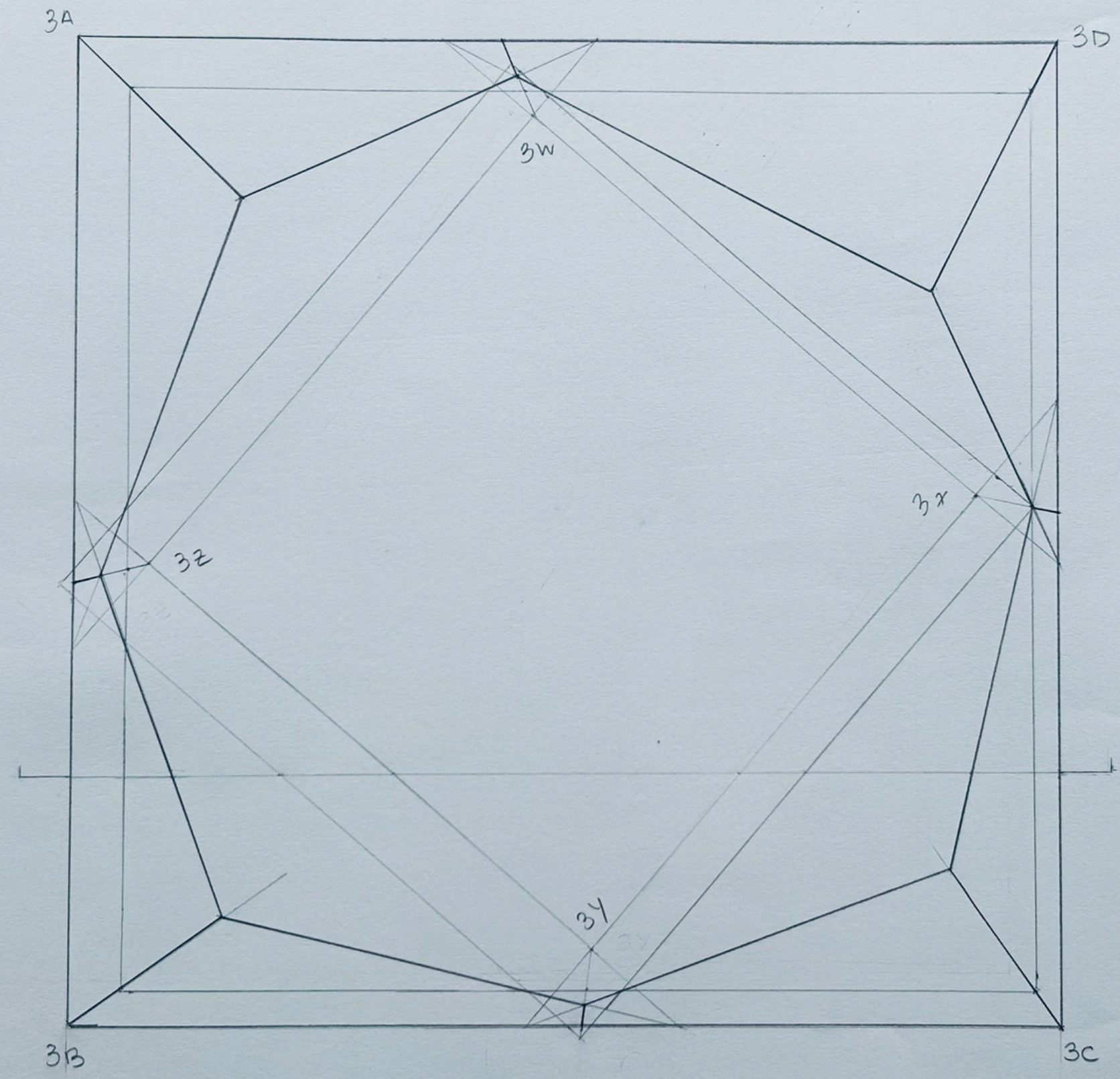


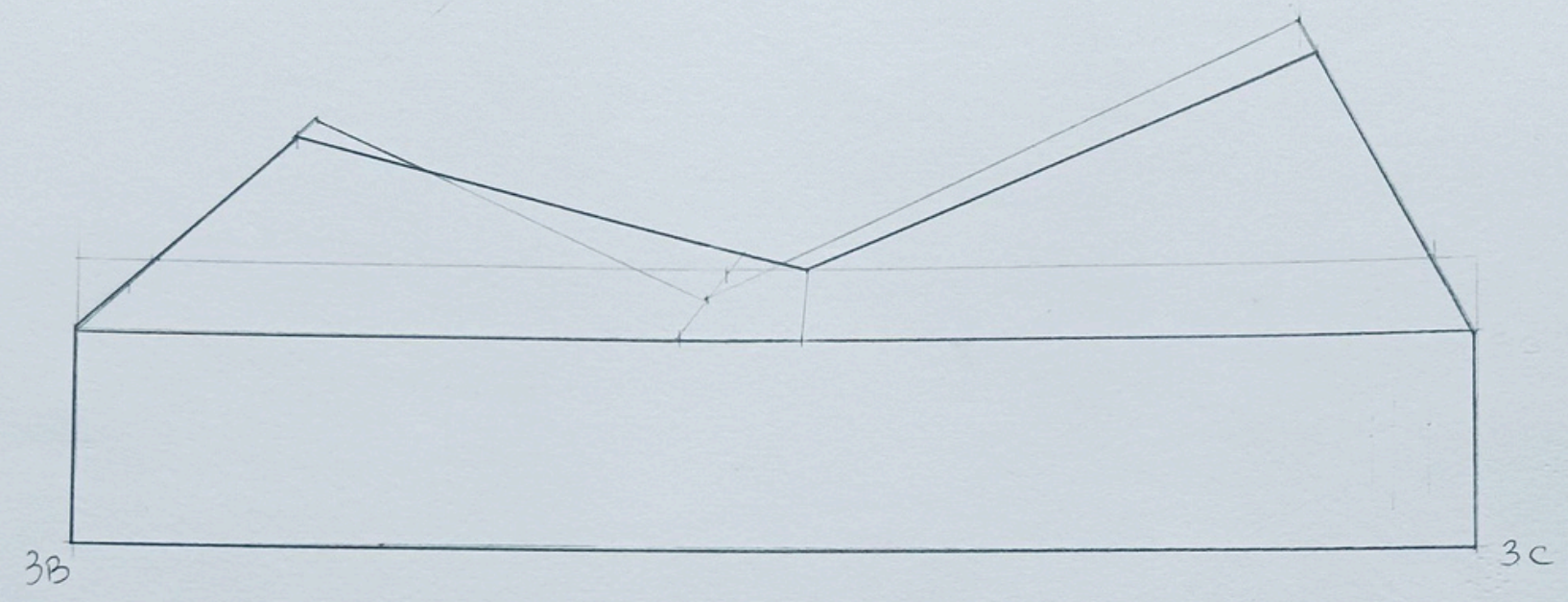
Escala 1/100

—
1 unidade
altimétrica

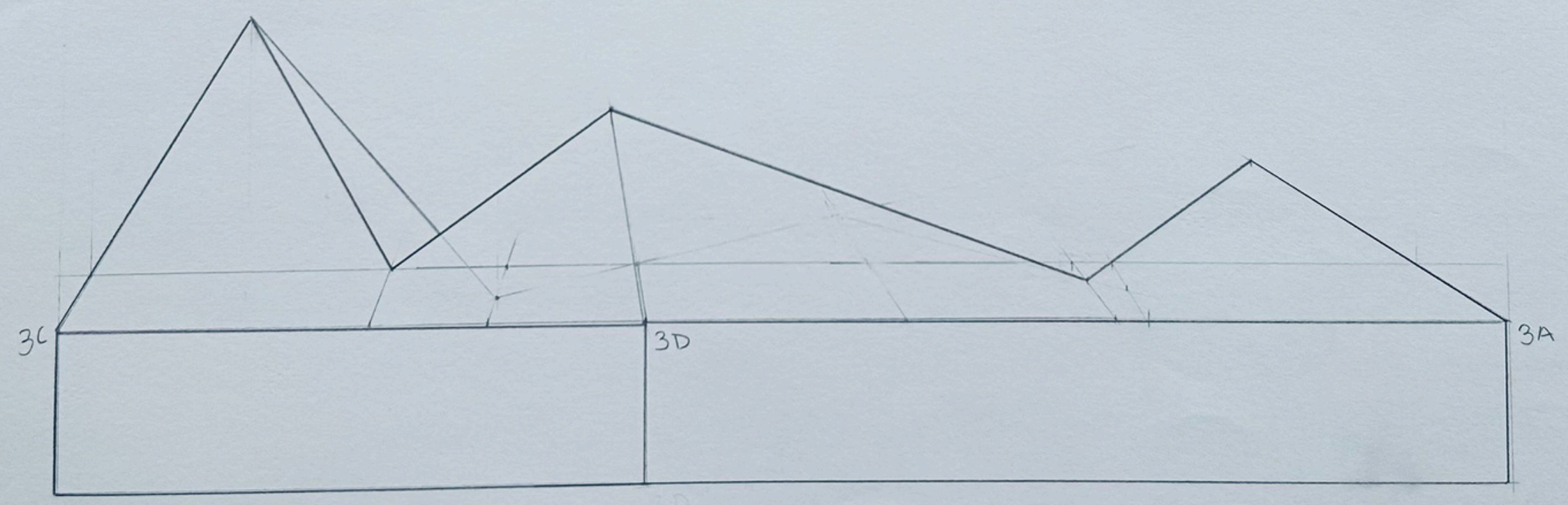
- AB 100% —
- BC 1,5 —
- CD 200% —
- DA 1 —
- WX 2 —
- XY 45° —
- YZ 0,75 —
- ZW 1 —

1-

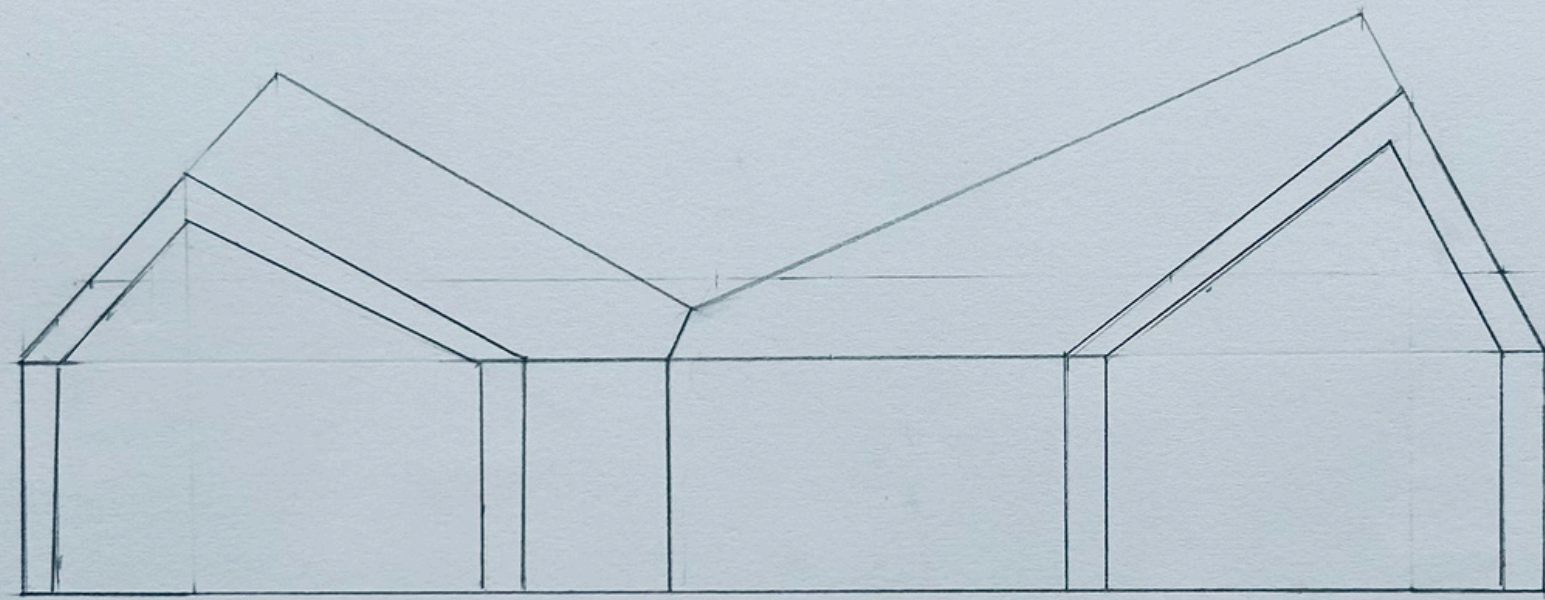




ALGADO PARALELO



ALGADO OBLÍQUO
(55°; 35°)



SECÇÃO
VERTICAL